

INDUS VALLEY MUKTESHWAR INDUS APPARTMENTS , NANITAL



INTRODUCTION:

INDUS VALLEY MUKTESHWAR project is the perfect choice for the nature lover, located at the height of about 7500 ft from the sea level, this project is one of the biggest in the area. It consists of **ready to move in** premium cottages with gardens, as well as customized cottage, apartments and studios. The project is spread out over 10 acres of land, and is easily accessible as it is located on the main Highway. Each residential unit has a wonderful view of the snowcapped Nanda Devi range. Many cottages have already been handed over to satisfied customers.

OVERVIEW:

INDUS APPARTMENT MUKTESHWAR

Presenting ready to move in 1 BHK Luxury apartment

Here are some key features:

- Super Buildup area 775 sq ft.
- Fully Furnished Optional.
- Parking (Purchasable optional)
- 1 Bedroom with 1 attached toilet + Lobby with Dining Area attached toilet + 1 Balcony + Patio + Personal Parking.
- Open modular Kitchen.
- High-End Bathroom Fittings & UPVC Fenesta windows.
- Large windows all around for better sun light and with 180 degree Himalayan view.
- Large green area.
- Wide front view.
- Complete privacy.

OVERVIEW:

Presenting ready to move in Studio Apartment

Here are some key features:

- Super Buildup area 388 sq. ft.
- Fully Furnished.
- Parking (Purchasable optional)
- Single big hall designed as Bedroom with attached toilet + Modular Kitchen + 1 Balcony
- High-End Bathroom Fittings & UPVC Fenesta windows.
- Large windows all around for better sun light and with 180 degree Himalayan view.
- Large green area.
- Wide front view.
- Complete privacy.

INDUS VALLEY ROUTE MAP



SITE PLAN



INDUS APPARTMENT LOCATION ON SITE

3D RENDERS



EXTERIOR 3D VIEWS





STUDIO APARTMENTS
Floor Plan





1 BHK FLOOR PLAN
Floor Plan



LIVING ROOM



3D FLOOR VIEW

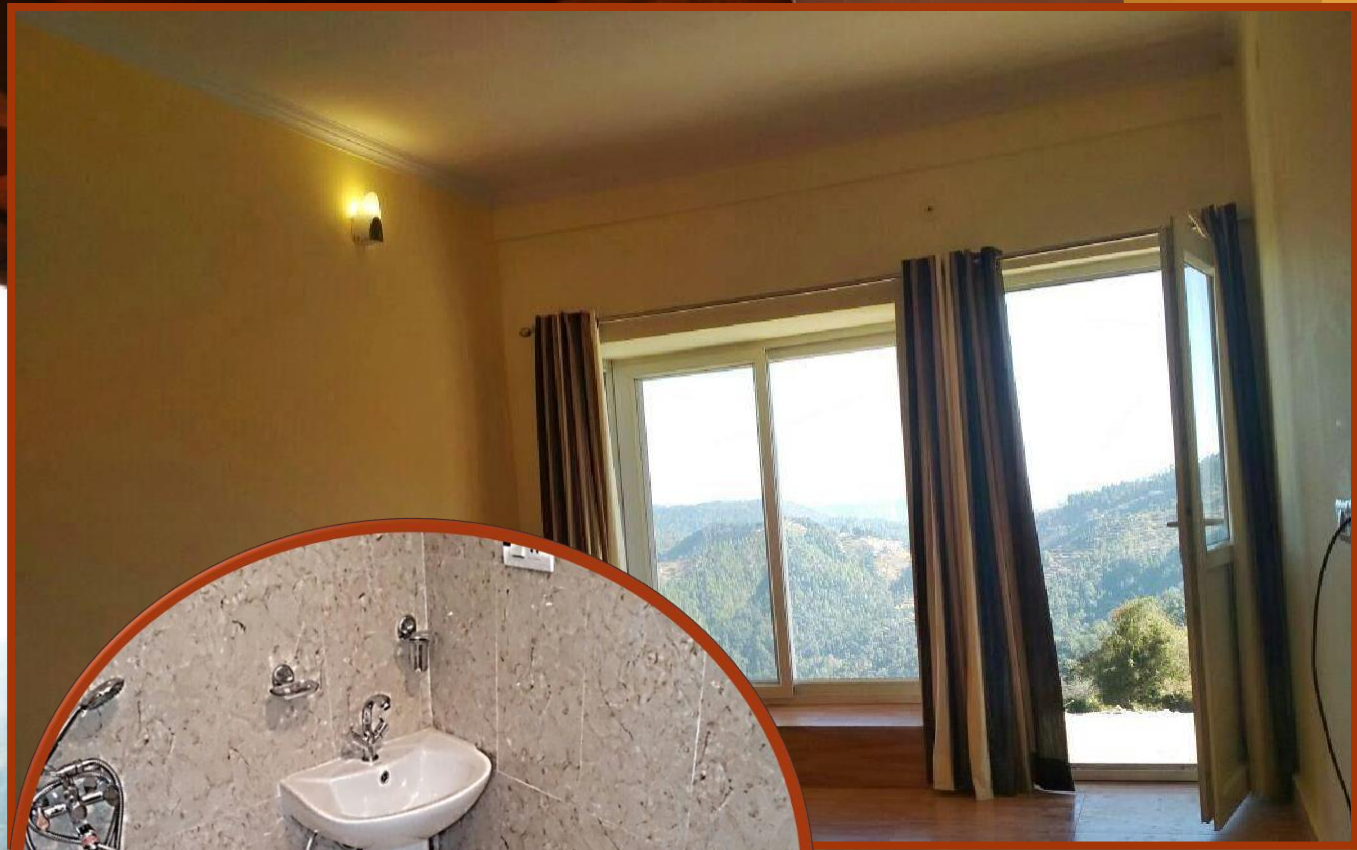
ACTUAL SITE PICTURES



Kitchen+ Bedroom



Kitchen



Bedroom with outside view



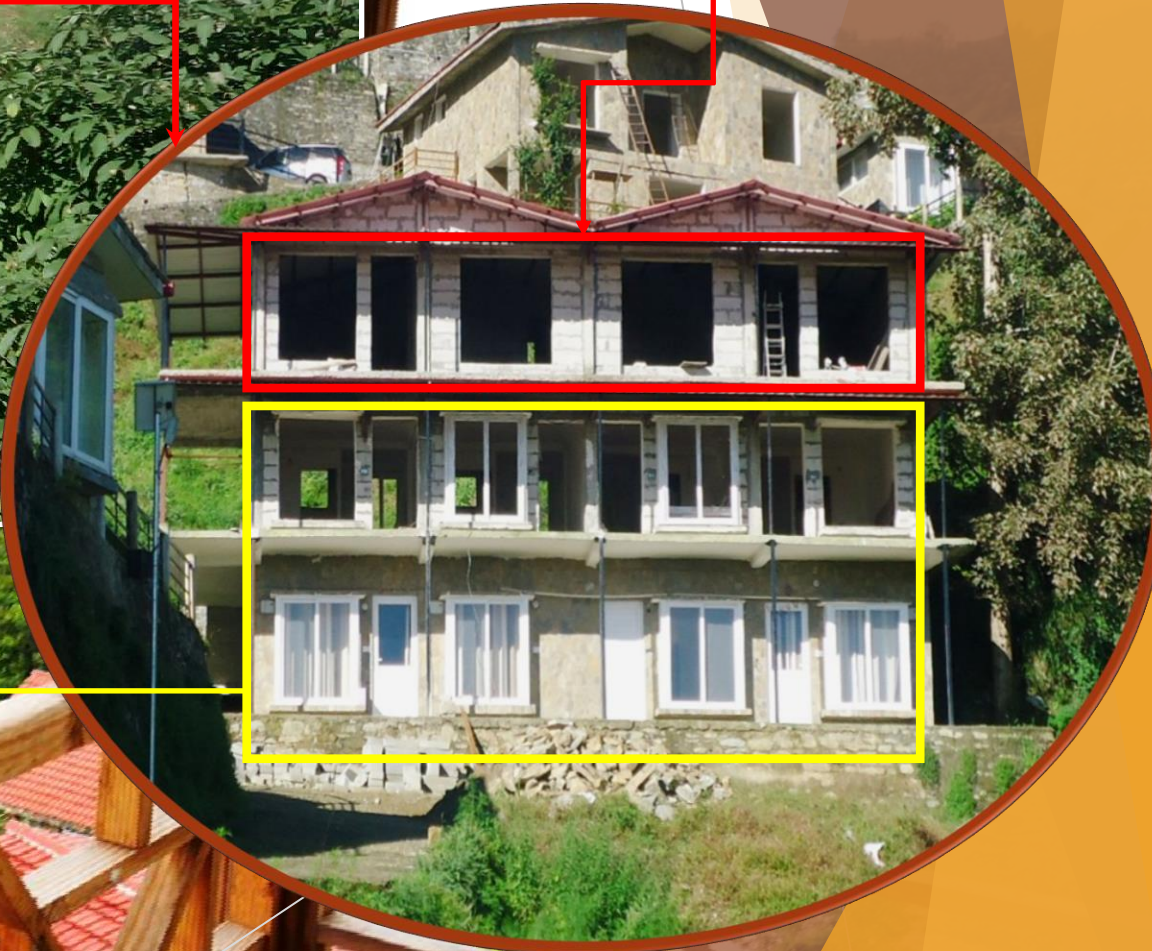
Washroom



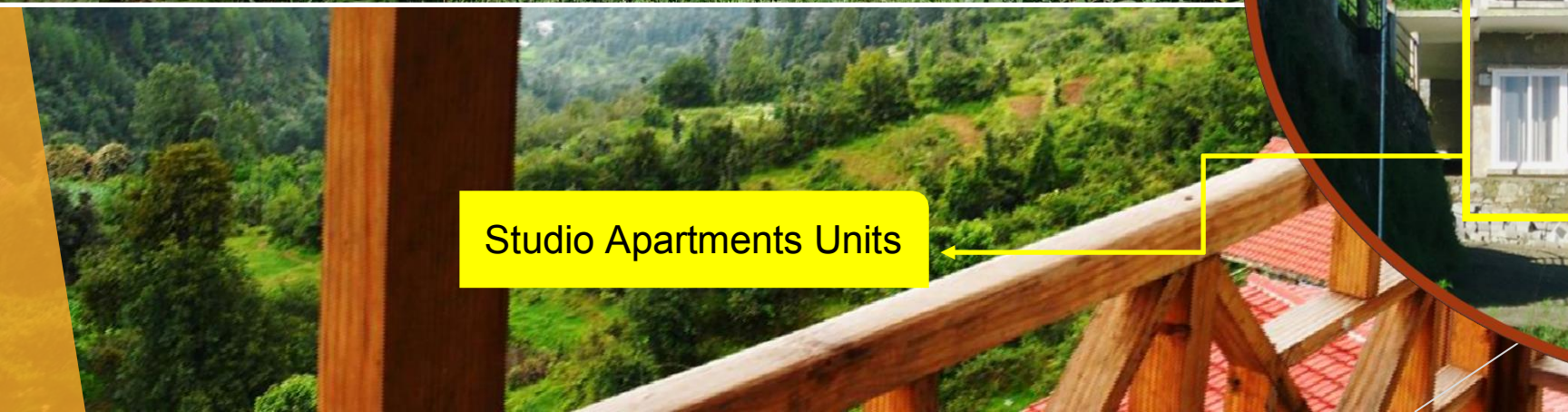
ACTUAL SITE PICTURES



1 BHK units



Studio Apartments Units



Specifications

➤ FLOORING

- Vitrified tiles with the wooden look in Bedroom & Living Room
- Anti-Skid tile in Bathroom

➤ TOILET & BATHROOM

- Pedestal Basin
- Fixtures and fittings in SS
- Wall hung the flush system
- Walls tiles up to 7ft

➤ INNER WALL FINISH

- POP and wall putty
- Acrylic paint finish

➤ ROOF

- Wooden Flash Cement Board
- Shingles Roof

➤ BEDROOM

- Wall built-in almira

➤ KITCHEN

- Modular kitchen with granite top
- Single bowl sink in stainless steel
- Cabinet on walls Colored designer
- tiles on walls up to 2ft above
- Counter.

➤ DOORS & WINDOWS

- UPVC – Fenestra or equivalent

➤ ELECTRICAL WORKS

- Wiring, MCB, and distribution boards as per ISI
- White modular switches
- Spotlights
- Musical doorbell

➤ OUTER WALL FINISH

- Stone finish

➤ RAILINGS

- Stainless Steel

➤ FIREPLACE

- In Living Room(only for cottages)

Specifications

Specification for Full Furnishing:-

➤ KITCHEN

- Exhaust fan
- Chimney
- Instant Geyser
- Refrigerator (in cottages)
- Microwave oven
- Induction cooking stove
- One induction cooking set
- One dinner set
- Cutlery Set
- Kitchen knife & chopping board
- 4 Glasses,4 coffee mugs & 1 Tray
- Spice Jars

➤ WASHROOM

- Geyser
- Exhaust fan
- Cabinet with mirror
- 1 designer towel set
- Towel holder
- Soap case with holder
- Toothbrush holder
- Shower curtains

➤ LIVING ROOM

- Curtains
- One sofa set
- One center table
- 4 Seater dining table
- One-color LED 32"
- Tata Sky connection
- One central designer lampshade
- Oil Radiator
- One medium-sized floor rug
- Doormat

➤ BEDROOM

- Wooden double bed with two side tables
- Mattress with two pillows sets
- Wall Built-in Almirah with mirror
- Two bedsheet sets
- One medium sized floor rug
- Two warm blankets
- Table lamp
- Curtains

Features and Facilities



180° snowcapped Himalayan View



Security



Customized cottages



Clubhouse & Restaurant Located on the main road



Studios & Apartment



Borewell and Rainwater Harvesting system



Fully furnished



Lush greenery



Ready-to-move



Winter snowfall



Easy payment plans



Cool summers



Gated community



Located on the main road

Note: As per maintenance agreement

ACTUAL SITE PICTURES



PRICE CHART:



THANK YOU!
FOR YOUR TIME AND INTEREST



Phone no. 91-9897509702
www.rginfraconstruction.com
rngarudi@gmail.com